




Practical Sustainability - Aluminum Cans & Ends

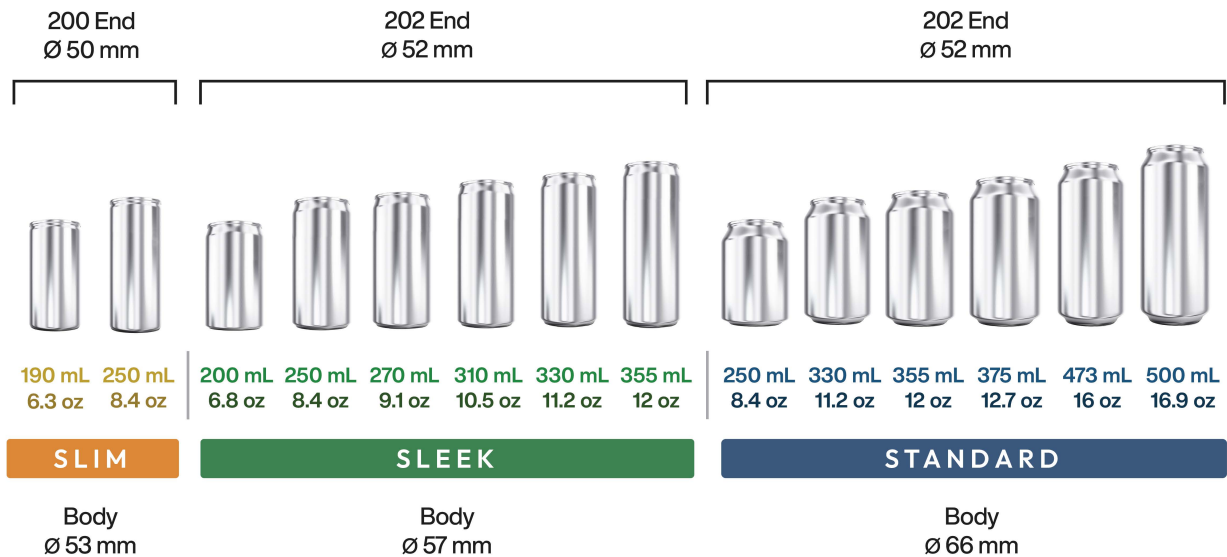


Practical, customizable and sustainable packaging solutions,
seamlessly integrated with logistics for your convenience. 

(604) 238-4188 | ALNAPACKAGINGCO.COM

2-piece Can Bodies

Popular Formats



Full Service End-to-End

With 400M monthly output and 1B can end capacity, we streamline your supply chain for efficient, cost-effective product delivery.



Eliminate Waste



Transparent Pricing



3rd Party Quality Audit

Certifications

ISO 9001, ISO 14001, OHSAS 18001, FSC 22000

Creating Your Custom Cans



Size Selection

Ensure a flawless fit for your drink



Printing

Traditional / Digital / Shrink-sleeve



Internal Coating

Epoxy / Bpani



Finish

Matte / Gloss / Retort / Tactile

3-piece Can Bodies & Aluminum Bottles



3-piece Can Bodies

Versatile, Customizable Cans for Every Need

SHAPE



CAPACITY

180 mL (6.1 oz) - 1 L (50.7 oz)

PRINTING

Litho, Direct, Embossing, Labeling

FINISH

Plain, Printed, Coated, Matte/Gloss

MATERIAL

Aluminum, Tinplate

Popular Formats

	Inner Dia.	Height Range	Volume Range	General Usage
#5	52.3 mm	55 mm - 200 mm	95 mL - 1.1L	Herbs, seafood, meat, pet food
#6	65 mm	55 mm - 200 mm	120 mL - 1.4 L	Seafood, meat, pet food
#7	73 mm	55 mm - 200 mm	155 mL - 1.7 L	Fruits, vegetables, sauces, soups
#8	83 mm	70 mm - 200 mm	270 mL - 2.5 L	Fruits, vegetables, sauces, soups
#9	99 mm	55 mm - 200 mm	355 mL - 3.5 L	Fruits, vegetables, sauces, soups
#12	127 mm	80 mm - 200 mm	804 mL - 4 L	Coffee powder, baby formula
#15	153 mm	120 mm - 240 mm	2.2 L - 9.1L	Protein powder, industrial-sized portions



Resealable Aluminum Bottles

Glass-like Feel, Aluminum Strength

SIZE Height 194 mm (7.6") - 238 mm (9.4")

CAPACITY

355 mL (12 oz) - 473 mL (16 oz)

PRINTING

Litho, Screen, Digital, Embossing

FINISH


Matte, Glossy, Brushed, Anodized

CAP



Pry-off, Twist-off

Can Ends





- 



Size Selection
Ensure a flawless fit for your can


- 


End Color
Choose the perfect palette for your end


- 

Tab Hue
Add a spark with standout tab colors


- 

Print Your Signature
Amplify brand exposure with unique prints



2-piece



202-SOT-LOE
(52.5 mm)



202-CDL-LOE
(52.5 mm)



200-SOT-LOE
(50 mm)



200-CDL
(50 mm)



200-RPT-LOE
(50 mm)



200-RPT-SOE
(50 mm)



200-SOT-SOE
(50 mm)



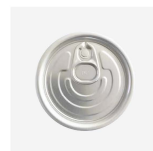
202-RPT-LOE
(52.5 mm)



202-RPT-SOE
(52.5 mm)

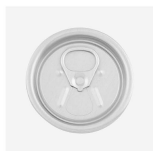


202-SOT-SOE
(52.5 mm)



202-FA
(52.5 mm)

3-piece



113-RPT
(46.5 mm)



113-SOT
(46.5 mm)



200-RPT
(50 mm)



200-SOT
(50 mm)



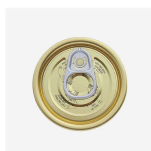
206-SOT
(57 mm)



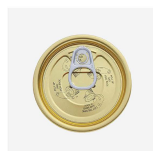
209-BE
(62.5 mm)



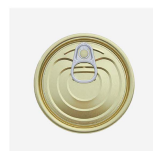
209-FA
(62.5 mm)



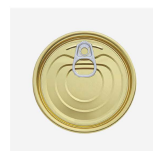
202-EOE
(52.3 mm)



211-EOE
(65 mm)



300-EOE
(73 mm)



307-EOE
(83 mm)



401-EOE
(99 mm)

Delivery Packaging



2-way Rollover Trays

Material(s): 32 ECT; Kraft b-flute | MOQ: 1 Pallet

Secure your products & simplify your logistics

Size	24-pack Standard	24-pack Sleek
Dimensions	15 3/4 x 10 5/8 x 3" (400 mm x 270 mm x 77 mm)	13 3/4 x 9 1/3 x 3" (350 mm x 237 mm x 77 mm)
Pallet Count	2,100 trays/pallet	2,800 trays/pallet
Capacity	24 standard beverage cans (211 Diameter, e.g. 355 mL, 473 mL, 500 mL)	24 sleek beverage cans (204 Diameter, e.g. 355 mL)

Features



Compact Storage

Flat-foldable for efficient space utilization



Easy Handling

No glue required, easily fold and unfold



Customized Impact

Tailor trays for lasting impressions

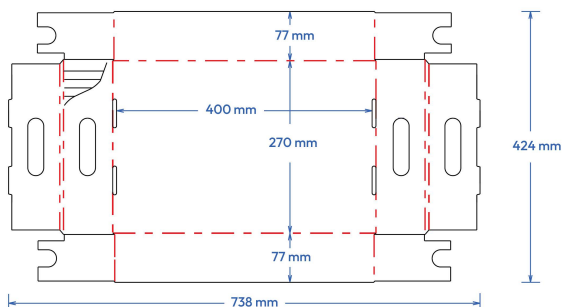


Secure Transportation

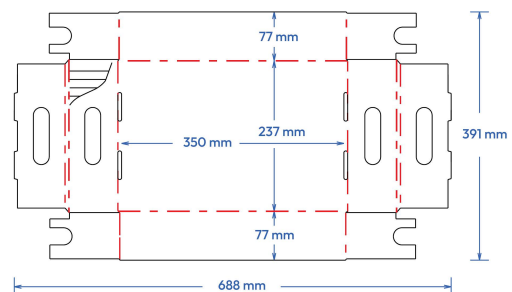
Sturdy trays for reliable product protection

Measurements

24-pack Standard



24-pack Sleek



About ALNA Packaging

ALNA Packaging provides manufacturers with their needs for packaging supplies.

ALNA offers industry leading quality, timing, and value. With an international team working during all hours of the day, we will ensure that your packaging solutions are fulfilled without any compromise to your vision. In times of rising costs, increased trade barriers and limited supply.

Our Vision

We strive to be the industry leader in delivering high-quality packaging solutions.

With a dedicated international team working tirelessly to fulfill orders, we aim to exceed expectations and drive success for our clients in a rapidly changing global marketplace.

Let's Connect



Main Office

12922 115th Ave
Surrey, BC
Canada
V3R 0E2

22+ Major Seaports

1 Billion + Can Bodies
2 Billion + Can Ends
18,000 + Containers Moved in a Year

Contact Us

ALNA Packaging Co.

Email: info@alnapackagingco.com

Website: alnapackagingco.com

Tel: (604) 238-4188

Social Media: [@alnapackagingco](#)