




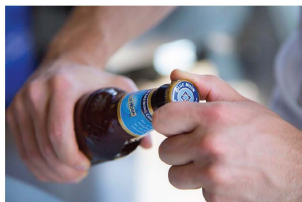
Everyday Reliability - Caps & Corks



Dependable caps and corks for food and beverage packaging,
ensuring product freshness and safety in your daily life. 

(604) 238-4188 | ALNAPACKAGINGCO.COM

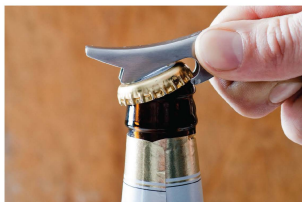
Crown Corks



Twist Off

Height:
Standard / Intermediate

Raw material:
Tin / TFS / Stainless Steel



Pry Off

Height:
Standard / Intermediate

Raw material:
Tin / TFS / Stainless Steel



Printing

Height:
Standard / Intermediate

Raw material:
Tin / TFS / Stainless Steel

Specifications

Standard:
6.65 +/- 0.20 mm

Intermediate:
6.00 +/- 0.15 mm

Plate Thickness:
0.20 - 0.23 mm

Manufacturing Partner



Capacity (pcs)

Twist Off Caps
4 Billion

Crown Caps
9 Billion

Equipment

- 4 Coating Lines
- 5 Printing Lines (incl. 6-colour UV line)
- 20 Twist Off Caps Production Line
- 3 High Speed Production Lines (AlfonsHaar)
- 6 SACMI 027 Crown Lines

Certification (Food Safety & QA)



FDA 21CFR170-189

FDA 21CFR175.300
Resinous and polymeric coatings

FDA 21CFR177.1210
Closures with sealing gaskets for food containers

CONEG



(EC) NO 1935/2004
Framework regulation

(EC) NO 2036/2006
GMP

(EU) NO 10/2011

94/62/EC Packaging and packaging waste

(EC) NO 1895/2005

(EC) NO 1907/2006



LEGB §30, §31



AS 2070-1999
Plastics materials for food contact use

Caps



We offer a wide range of closures in different sizes and styles to meet your specific needs.

Our tamper-evident and durable closures provide a secure seal, ensuring the freshness and safety of your products. Whether you're packaging food, beverages, or pharmaceutical products, our metal caps closures have got you covered.

Popular Formats

	MTO	MTB	RTO	RTB	RTS	RSB	RTSF	DWO	DWB
30	●	●	●	—	—	—	—	—	—
38	●	—	●	●	—	—	—	—	—
43	—	—	●	●	—	—	—	—	—
48	—	—	●	●	—	—	—	—	—
53	●	●	●	●	●	●	—	—	—
58	—	—	●	●	●	●	●	●	●
63	—	—	●	●	●	●	●	●	●
66	—	—	●	●	—	—	—	●	●
68	●	—	—	—	—	—	—	—	—
70	—	—	—	—	●	●	—	—	●
77	—	—	—	—	●	●	—	—	—
82	—	—	—	—	●	●	—	—	—
100	—	—	—	—	—	—	●	—	—

Additional Packaging Solutions

The versatility you need - explore our full range of packaging solutions.



Cans & Ends



Aseptic Packaging



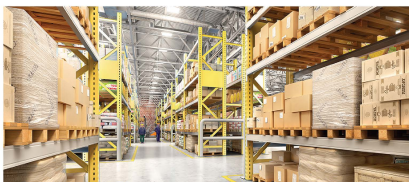
Reusable Bags



Restaurant Supplies



Warehousing & Freight Service



Our warehousing services, available across North America and China, are designed with a focus on minimizing waste, improving lead times, and enhancing overall quality.

▶ [Contact our BDM for a full catalogue](#)

About ALNA Packaging

ALNA Packaging provides manufacturers with their needs for packaging supplies.

ALNA offers industry leading quality, timing, and value. With an international team working during all hours of the day, we will ensure that your packaging solutions are fulfilled without any compromise to your vision. In times of rising costs, increased trade barriers and limited supply.

Our Vision

We strive to be the industry leader in delivering high-quality packaging solutions.

With a dedicated international team working tirelessly to fulfill orders, we aim to exceed expectations and drive success for our clients in a rapidly changing global marketplace.

Let's Connect



Main Office

12922 115th Ave
Surrey, BC
Canada
V3R 0E2



22+ Major Seaports

1 Billion + Can Bodies
2 Billion + Can Ends
18,000 + Containers Moved in a Year

Regional Office

Xiamen, China
Hong Kong, China

Contact Us

ALNA Packaging Co.

Email: info@alnapackagingco.com

Website: alnapackagingco.com

Tel: (604) 238-4188

Social Media: [@alnapackagingco](#)